

IMPORTANT
PLEASE DO NOT RETURN TO STORE

If You're Having Trouble, We're Here to Help!



Call us 24/7 at 1-855-292-4087
 E-mail us at support@altec Lansing.com or visit us at altec Lansing.com

REGISTER YOUR PRODUCT

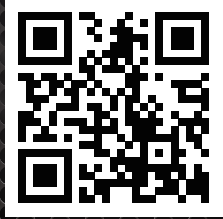
To receive news, exclusive deals, OTA or firmware updates, warranty information and more please register your product at

altec Lansing.com



WELCOME 😊

Thank you for purchasing an Altec Lansing product. Download our App to unlock all the features our products have to offer!



follow us
 @altec Lansingofficial



follow us
 @altec Lansing



follow us
 @altec Lansingofficial

12 Month Limited Warranty

All Altec Lansing products come with 12 month limited warranty from the date of its original purchase

24 Hour Customer Support

We love our customers, and we care about your experience with Altec Lansing. If you need assistance, please call us at 1.855.292.4087 or e-mail support@altec Lansing.com

www.altec Lansing.com



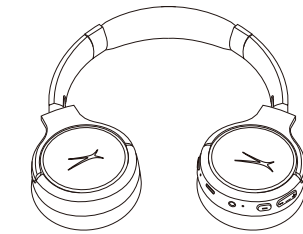
JUST LISTEN.



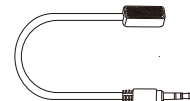
Nanophone ANC On Ear Wireless Headphone
MZX5400

QUICK START GUIDE

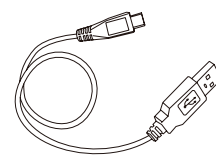
In the Box



Nanophone ANC On Ear Wireless Headphone

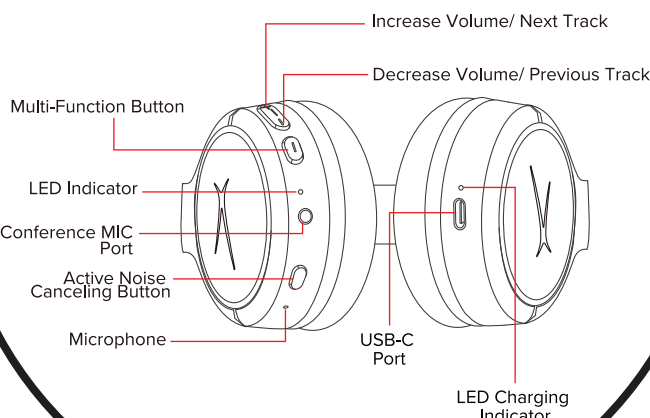


Conference Microphone

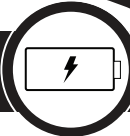


USB-C Charging Cable

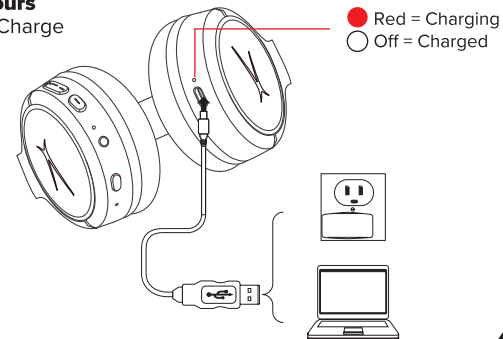
A Closer Look



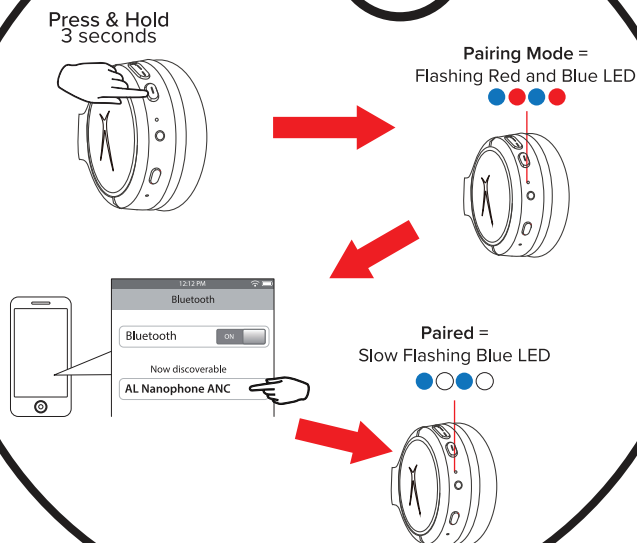
Charging



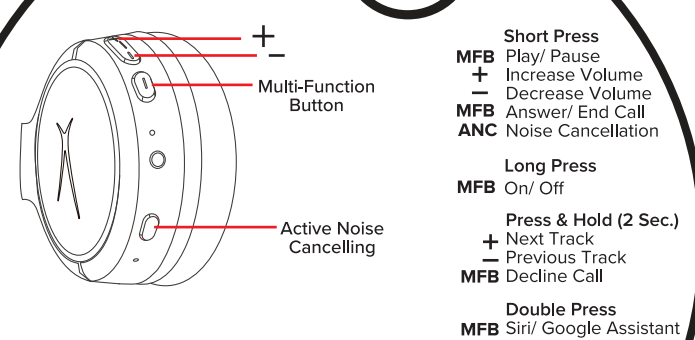
3 Hours
 Full Charge



Bluetooth Pairing



Headphone Controls



*To use Siri or Google Assistant, you must have a phone that is compatible with one of the two voice assistants (iOS or Android, respectively).

*Your wireless headphones will not work with Siri or Google Assistant if the assistant is not first enabled within the settings on the phone. For more information, see your phone's user manual.

*You must be within Bluetooth® range to use Siri or Google Assistant via your wireless headphones.

est. **FIRST**

Changes or modifications not expressly approved by the party responsible for compliance could void the user's authority to operate the equipment.

This device complies with Part 15 of the FCC Rules. Operation is subject to the following two conditions: (1) this device may not cause harmful interference, and (2) this device must accept any interference received, including interference that may cause undesired operation.

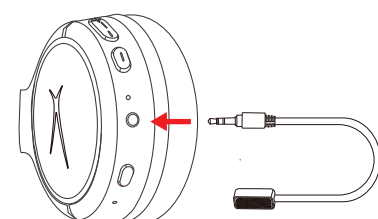
This equipment has been tested and found to comply with the limits for a Class B digital device, pursuant to Part 15 of the FCC Rules. These limits are designed to provide reasonable protection against harmful interference in a residential installation. This equipment generates, uses and can radiate radio frequency energy and, if not installed and used in accordance with the instructions, may cause harmful interference to radio communications. However, there is no guarantee that interference will not occur in a particular installation.

If this equipment does cause harmful interference to radio or television reception, which can be determined by turning the equipment off and on, the user is encouraged to try to correct the interference by one or more of the following measures:

- Reorient or relocate the receiving antenna.
- Increase the separation between the equipment and receiver.
- Connect the equipment into an outlet on a circuit different from that to which the receiver is connected.
- Consult the dealer or an experienced radio/TV technician for help.

FOLLOW US ON #myaltec Lansing

Conference Microphone



Use the included conference microphone by plugging it into the MIC port.

For additional user materials and warranty information, please visit altec Lansing.com